

▶ Consumer/Trade Shows

▶ Conventions/  
Conferences &  
Meetings

▶ Sporting Events &  
Competitions

▶ Banquets & Parties

▶ Weddings

▶ Graduations &  
Reunions

▶ Agricultural Events

▶ Rodeos &  
Horse Shows



*Welcome to Tampa*

- ▶ 355-acre, Versatile Complex with Open Lots
- ▶ 18,000 Lighted Parking Spaces
- ▶ 250+ Camping Spaces
- ▶ Conveniently Located off Interstate-4
- ▶ Event Management Service
- ▶ On-site Catering Service and Concessions
- ▶ On-site Convention Service
- ▶ Partner Hotels & Vehicle Rental

# Welcome to the Florida State Fairgrounds



Situated in the heart of the bustling Tampa Bay area, the Florida State Fairgrounds offers total flexibility and versatile accommodations to meet the needs of any event. Each building on the grounds features its own unique specifications, and is adaptable for a variety of uses. Whether your event requires an indoor venue or vast outdoor spaces, you have come to the right place.

We are home to the annual Florida State Fair, the Bob Thomas Equestrian Center and the Ford Amphitheatre. The Fairgrounds is conveniently located off interstate highways, close to some of Florida's most popular attractions, beaches, state parks, historic locations, downtown business, shopping malls, and numerous hotels and restaurants.

The Florida State Fairgrounds staff aims to surpass client and customer expectations with every event. Host your next event at the Fairgrounds to experience first hand all the benefits we have to offer.



## Need Space? **Expo Hall** *is the place!*

▶ Largest, Most Versatile Building on the Grounds

▶ 88,000 Square Feet of Exhibit Space

▶ 140,000 Square Feet of Combined Event Space

▶ 6 Drive-through Doors

▶ Climate-controlled Building

▶ On-site Camping Space for Exhibitors and Guests



With 88,000 square feet of exhibit space and the ability to expand to 140,000 square feet of event space when combined with the adjacent venue, the Expo Hall is the perfect venue for a grand event. In fact, the Expo Hall has hosted Ringling Bros. and Barnum & Bailey®, the RV Supershow, Turner Expositions Home Show, and numerous consumer events throughout the year.

### APPROPRIATE FOR:

Home and Health Shows

Boat and Car Shows

B2B Trade Shows

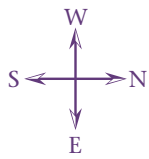
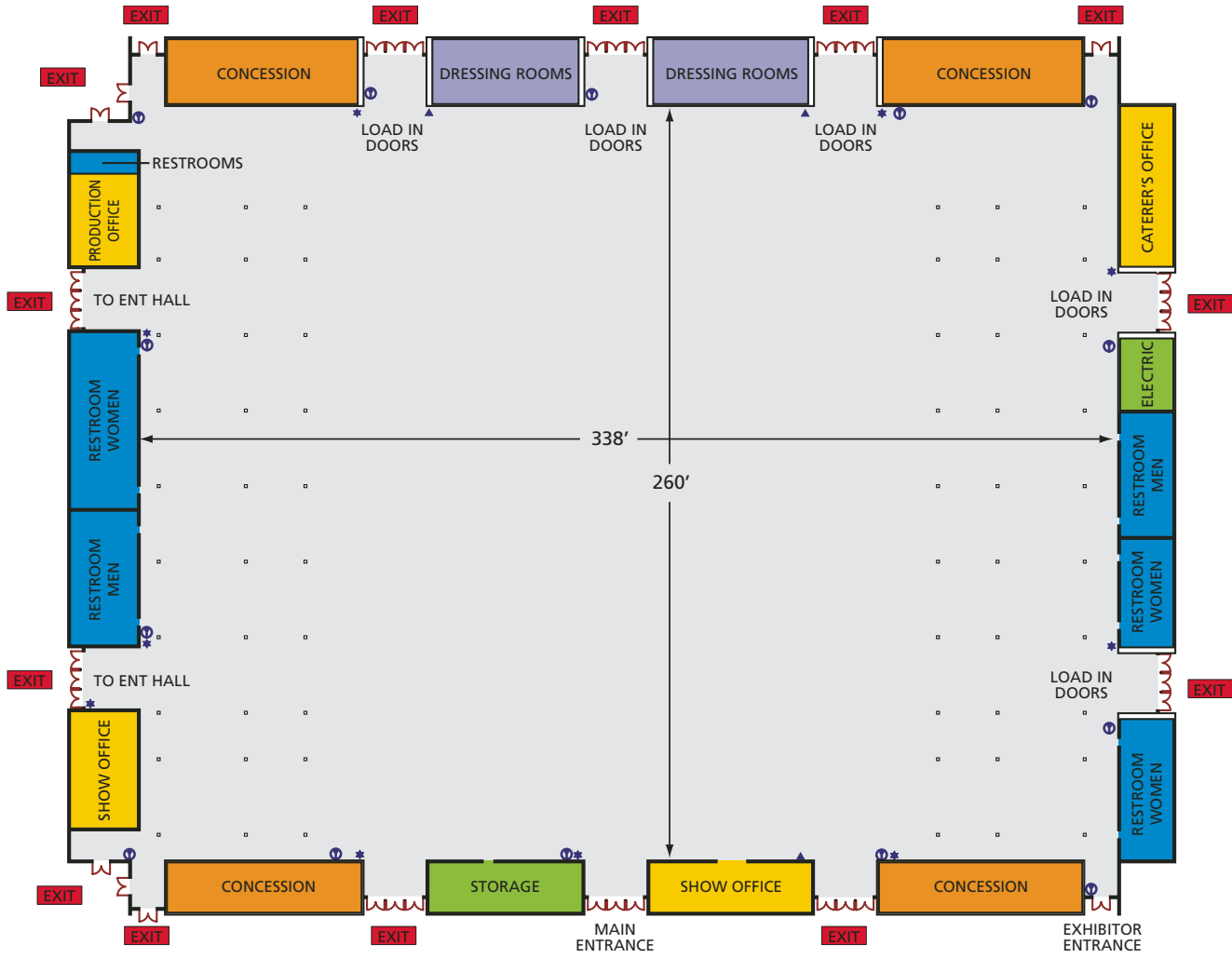
Conventions

Consumer Showcases

Sporting Events



# EXPO HALL



### SYMBOLS LEGEND

- ★ FIRE EXTINGUISHER
- ▲ FIRE HOSE STATION
- Ⓜ FIRE ALARM PULL STATION (MANUAL)

**88,000 sq. ft.**

<b>Size*</b> .....	338' x 260'	<b>Reception Seating</b> .....	8,700
<b>Ceiling</b> .....	45'	<b>Banquet Seating</b> .....	7,000
<b>Theatre Seating†</b> .....	11,926	<b>10' x 10' Booths</b> .....	410
<b>Classroom Seating</b> .....	5,500	<b>Load In Doors</b> .....	2-18' x 14' 2-18' x 16'

\*Size dimensions based on usable event space. †Theatre seating number includes bleacher set-up.

# Your event takes center stage here

▶ 52,000 Square Feet

▶ Capacity of up to 5,000 People

▶ Dressing Rooms and Show Offices

▶ Easy Load-in and Load-out

▶ Climate-controlled Building



The Entertainment Hall boasts 36-foot high ceilings, two dressing rooms downstairs with show offices upstairs, and easy load-in and load-out accessibility. The venue can seat up to 5,000 with portable bleachers set up for spectator viewing.

Need more space? The Entertainment Hall can be combined with the adjacent 88,000 square foot Expo Hall to create an area totaling 140,000 square feet in which to stage your event.

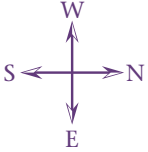
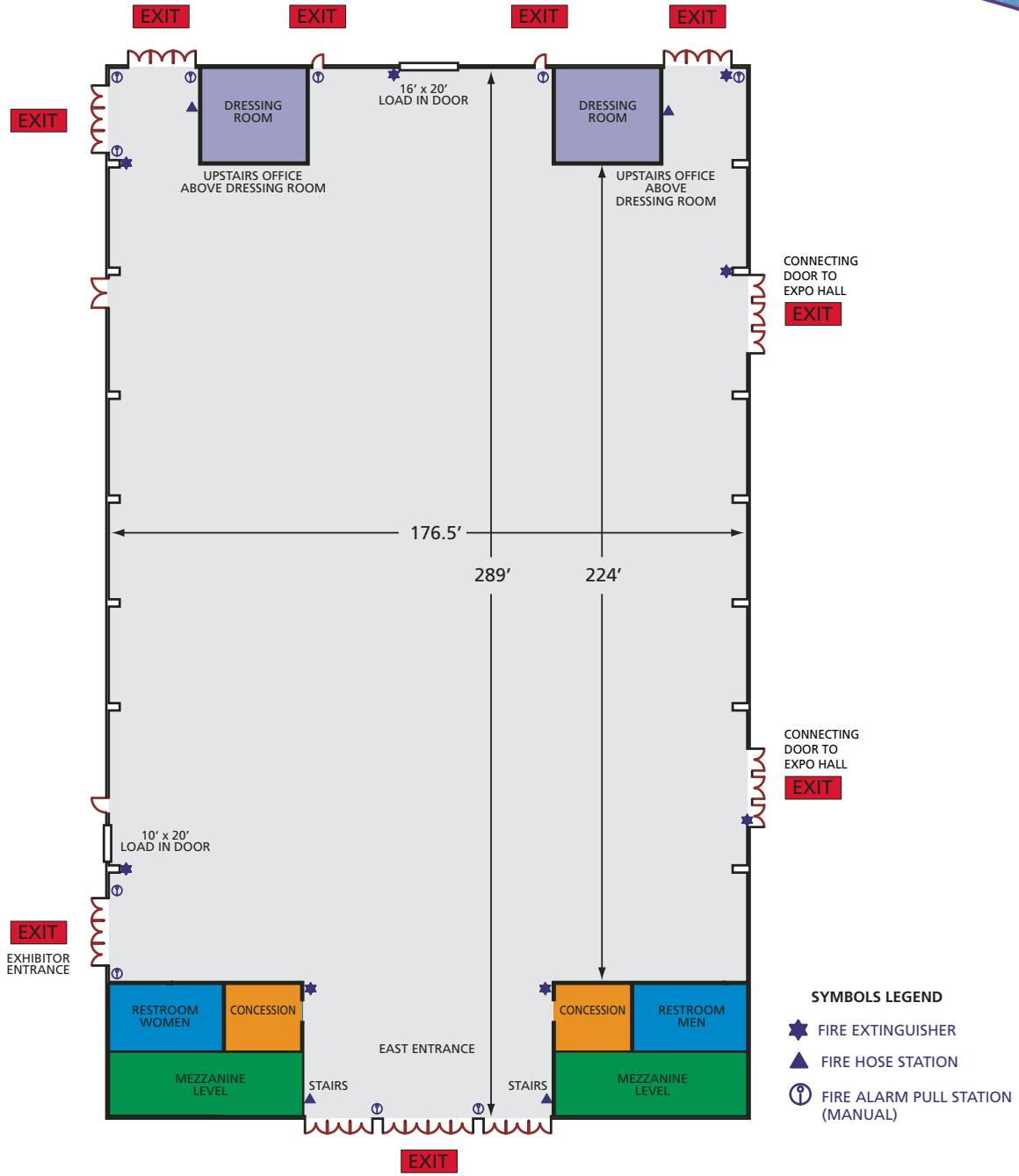
Alone or combined with the Expo Hall, this venue is sure to be a crowd pleaser.

## APPROPRIATE FOR:

- Craft Shows
- Merchandise Sales
- Special Events
- Competitions
- Sporting Events



# ENTERTAINMENT HALL



**52,000 sq. ft.**

<b>Size*</b>	224' x 176.5'
<b>Ceiling</b>	36'
<b>Theatre Seating†</b>	5,000
<b>Classroom Seating</b>	2,500

<b>Reception Seating</b>	4,000
<b>Banquet Seating</b>	3,300
<b>10' x 10' Booths</b>	218
<b>Load In Doors</b>	1-10' x 20' 1-16' x 20'

\*Size dimensions based on usable event space. †Mezzanine level upstairs provides seating in bleachers.

# Extraordinary venue for your Spectacular Event

▶ Up to 40,000 Square Feet

▶ 25 Foot High Ceiling

▶ Up to 211 Booth Spaces

▶ 4,000 Person Total  
Seating Capacity

▶ Climate-controlled  
Building



The Special Events Center is an ideal venue for any occasion. This modern and versatile building provides up to 40,000 square feet of usable space under 25-foot high ceilings.

If you are planning a smaller event, a folding acoustical wall can divide the space into 15,000 and 24,000 square feet sections. For a private or corporate event, the venue provides ample accommodations for parties up to 4,000 people in a variety of seating styles.

Take a look at the Special Events Center and see why it's been the site for numerous cheerleading competitions, the Gatlinburg Craft Show during the annual Florida State Fair, and the yearly National Street Rod Association's car shows.

## APPROPRIATE FOR:

Trade Shows

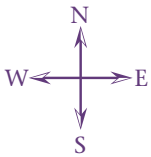
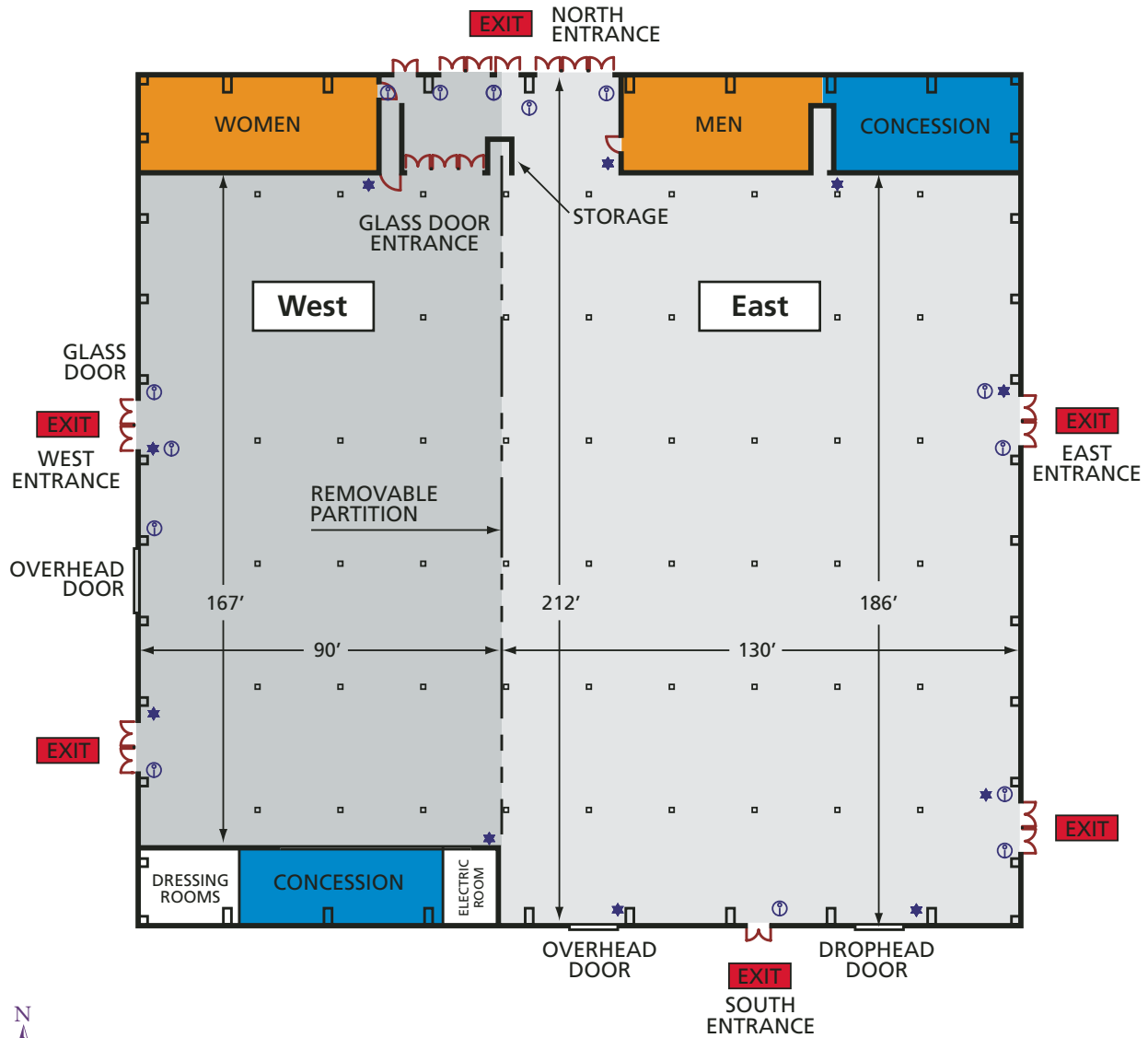
Business Functions

Banquets/Parties

Sporting Events



# SPECIAL EVENTS CENTER



## SYMBOLS LEGEND

- ★ FIRE EXTINGUISHER
- ▲ FIRE HOSE STATION
- ⓘ FIRE ALARM PULL STATION (MANUAL)

### West

**39,210 sq. ft.  
Combined**

### East

**15,030 sq. ft.**

**24,180 sq. ft.**

<b>Size*</b> .....	90' x 167'
<b>Ceiling</b> .....	25'
<b>Theatre Seating</b> .....	1,500
<b>Classroom Seating</b> .....	900
<b>Reception Seating</b> .....	1,500
<b>Banquet Seating</b> .....	1,250
<b>10' x 10' Booths<sup>†</sup></b> .....	84
<b>Load In Doors</b> .....	1-16' x 20'

<b>Size*</b> .....	130' x 186'
<b>Ceiling</b> .....	25'
<b>Theatre Seating</b> .....	2,500
<b>Classroom Seating</b> .....	1,500
<b>Reception Seating</b> .....	2,400
<b>Banquet Seating</b> .....	2,000
<b>10' x 10' Booths<sup>†</sup></b> .....	114
<b>Load In Doors</b> .....	2-16' x 20'

\*Size dimensions based on usable event space. †When using entire building, layout will allow for 211 booth spaces.

Where  
**Your Event** will leave  
a lasting impression

- ▶ 12,280 Square Feet of Event Space
- ▶ Newly Renovated with Appealing Decor and Carpeting
- ▶ Climate-controlled Building
- ▶ Adjacent Botanical Gardens
- ▶ Outdoor Terrace for Entertaining



The newly renovated Florida Center and Botanical Gardens provides guests with an attractive and fresh setting that is perfect for both private and public functions. The nearby Botanical Gardens offers a beautiful and quaint backdrop for a ceremony or cocktail reception, and the adjoining outdoor Terrace provides a lovely atmosphere for your guests to socialize.

**APPROPRIATE FOR:**

Weddings / Receptions

Reunions / Parties

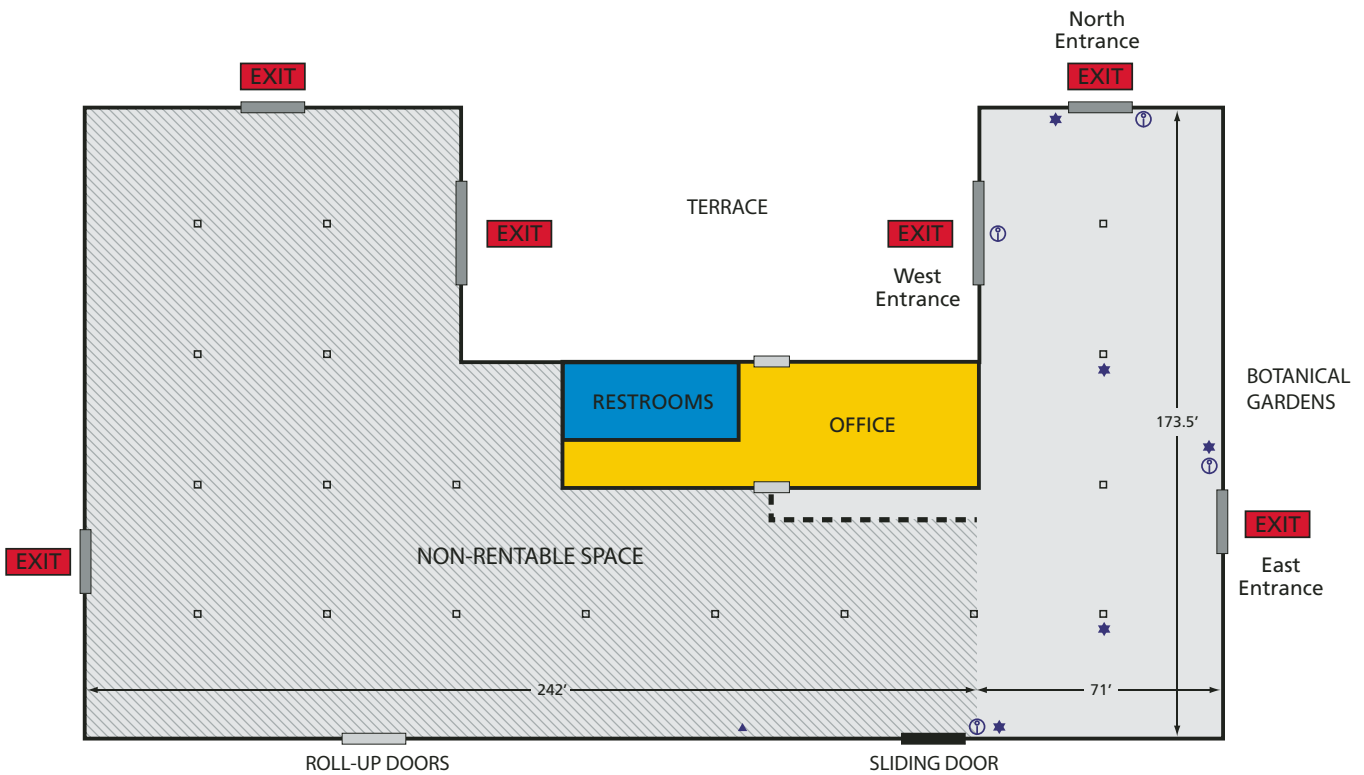
Fashion Shows / Fundraisers

Upscale Trade Shows

Meetings / Seminars

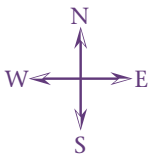


# FLORIDA CENTER



## SYMBOLS LEGEND

- ★ FIRE EXTINGUISHER
- ▲ FIRE HOSE STATION
- Ⓜ FIRE ALARM PULL STATION (MANUAL)



**Florida Center – 12,280 sq. ft.**  
 (Rentable Space)\*  
**Botanical Gardens – 26,000 sq. ft.**  
**Terrace – 15,828 sq. ft.**

**Size** ..... 71' x 173.5'  
**Ceiling** ..... 18'  
**Theatre Seating** ..... 1,350  
**Classroom Seating** ..... 500

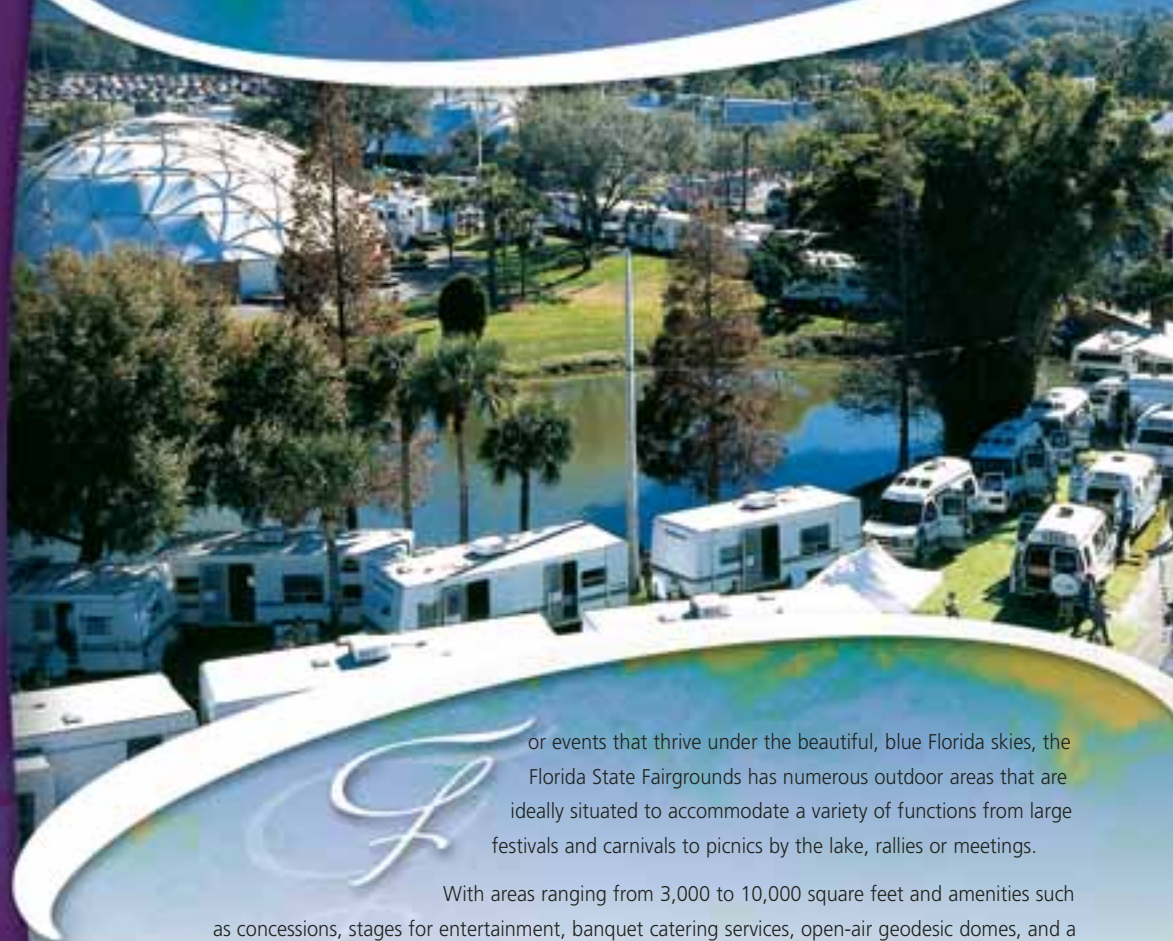
**Reception Seating** ..... 1,200  
**Banquet Seating** ..... 1,000  
**10' x 10' Booths** ..... 70  
**Load In Doors** ..... 1-16' x 15'

\*Seating numbers are approximate and based on configuration. The entire Florida center building is 44,000 square feet, of which 12,280 sq. ft. is rentable space.

# 355 Landscaped Acres

*provide limitless event possibilities*

- ▶ 355 Acres
- ▶ Parking for 18,000 Vehicles
- ▶ 3 RV Parks
- ▶ Concession Facilities Available
- ▶ Veranda Restaurant
- ▶ Floating Restaurant



or events that thrive under the beautiful, blue Florida skies, the Florida State Fairgrounds has numerous outdoor areas that are ideally situated to accommodate a variety of functions from large festivals and carnivals to picnics by the lake, rallies or meetings.

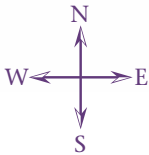
With areas ranging from 3,000 to 10,000 square feet and amenities such as concessions, stages for entertainment, banquet catering services, open-air geodesic domes, and a lovely Floating Restaurant that sits atop a picturesque lake overlooking tropical palms and colorful fountains, you'll find the Fairgrounds to be the perfect setting for your outdoor event.

#### APPROPRIATE FOR:

- Boat, Car & RV Shows
- Festivals
- Picnics
- Camping



# OUTDOOR EVENTS



## 355 Acres\*

- Midway ..... 1,620,000 sq. ft.
- Mall ..... 300,000 sq. ft.
- Oak Grove ..... 80,000 sq. ft.
- Terrace ..... 15,828 sq. ft.
- North Pad ..... 15,000 sq. ft.

- Veranda Restaurant ..... 2,500 sq. ft.
- Floating Restaurant ..... 1,500 sq. ft.
- Domes (3 total) .... 1-10,500 2-6,400 sq. ft.
- Cracker Country ..... 5 acres
- Parking Capacity ..... 18,000 spaces

\*Based on total land with open lots, buildings and parking spaces. 1 acre = 43,560 sq. ft.

# First-Class facilities perfect for showcasing your event

▶ 23 Acres of Property

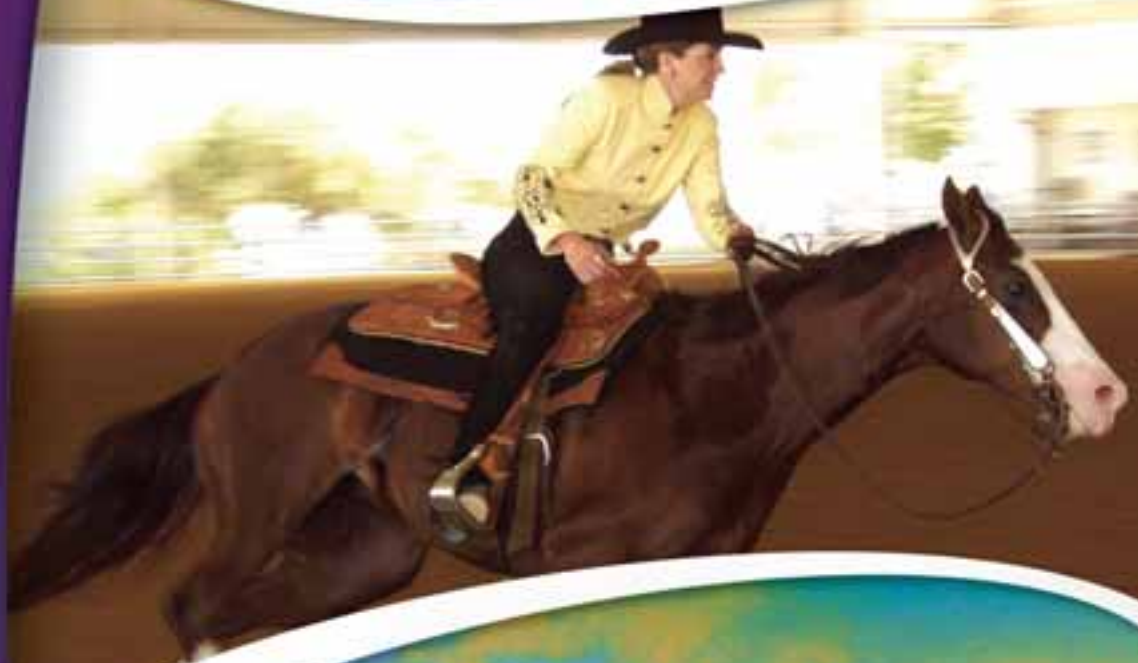
▶ 471 Horse Stalls

▶ Five Barns

▶ Exercise Grounds

▶ Banquet and  
Festival Seating

▶ Climate-controlled  
Indoor Pavilion



Our world-renowned Bob Thomas Equestrian Center features everything you need to host a world-class equestrian event. Our center consists of horse exercise grounds, warm-up rings, two show rings, a gran prix ring and a covered arena. In addition, the 10,000 square foot indoor, climate-controlled pavilion can accommodate banquet and festival seating overlooking the show rings.

Adjacent to the Equestrian Center is the Charlie Lykes Arena Complex. This venue provides indoor seating for up to 2,000 spectators. The connected show barns, located to the east and west side of Charlie Lykes Arena, provide an additional 77,875 square feet of housing and show space. All of which makes this complex the perfect host to the South's premier agricultural and livestock competitions as well as 5-star rodeos.

## APPROPRIATE FOR:

Agricultural Events

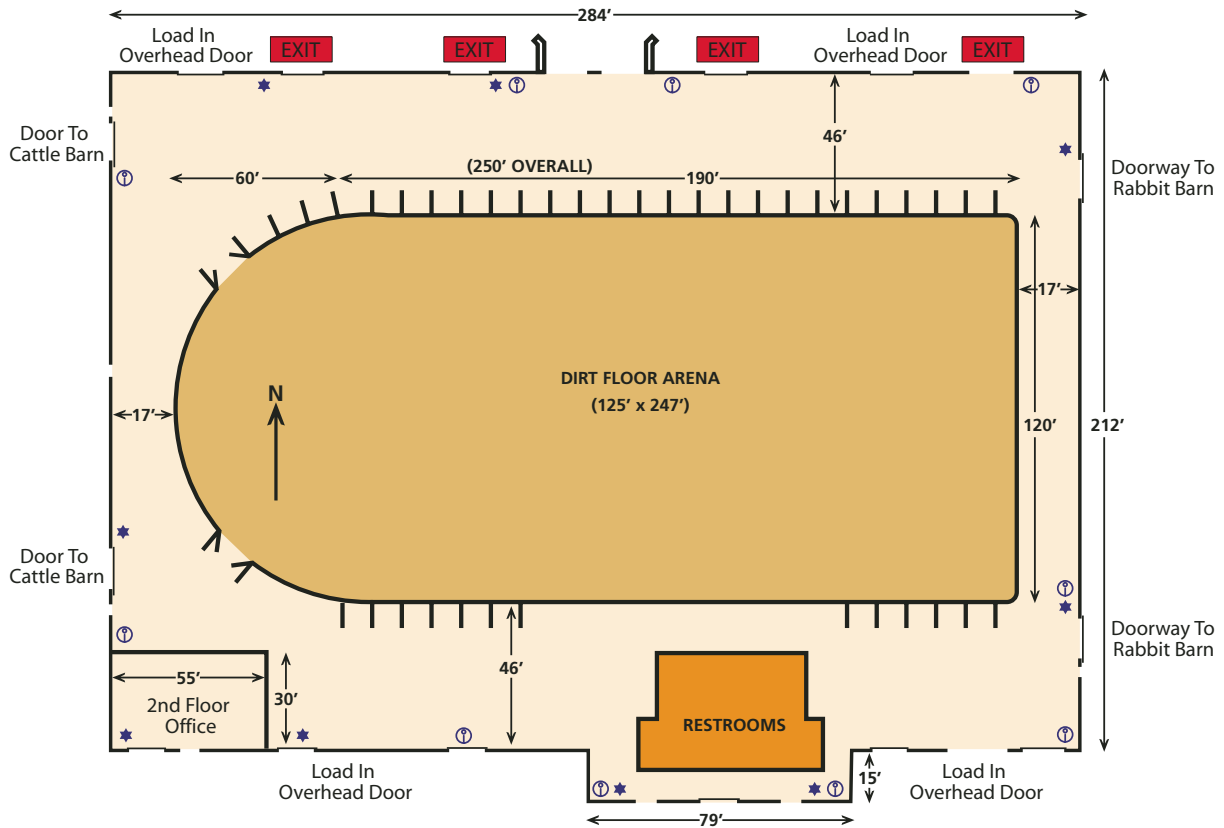
Rodeos

VIP Banquets



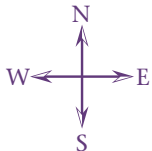
# BOB THOMAS EQUESTRIAN CENTER

## Charlie Lykes Arena Complex



### SYMBOLS LEGEND

- ★ FIRE EXTINGUISHER
- Ⓜ FIRE ALARM PULL STATION (MANUAL)



### Charlie Lykes Arena Complex – 61,875 sq. ft.

Size	284' x 212'
Ceiling	45 ft.
Bleacher Seating	2,000
Load In Doors	4-16' x 18'

### Equestrian Center Property – 23 Acres\*

AG Hall of Fame	16,000 sq. ft.	Gran Prix Ring	95,625 sq. ft.
Barn A	91 stalls	Hitching Post Restaurant	3,750 sq. ft.
Barn B	83 stalls	Livestock Barn	61,875 sq. ft.
Barn C	83 stalls	Manna Pro Pony Ring	60,000 sq. ft.
Barn D	123 stalls	Pavilion	10,000 sq. ft.
Barn E	91 stalls	Rabbit/Poultry Barn	16,000 sq. ft.
Charlie Lykes Arena	61,875 sq. ft.	West Ring	60,000 sq. ft.
Covered Arena	50,000 sq. ft.	Feed Store*	5,000 sq. ft.

\*1 acre = 43,560 sq. ft. †The Feed Store sells primarily shavings & hay.



# FLORIDA STATE FAIRGROUNDS



P.O. Box 11766, Tampa, FL 33680  
Phone 813.621.7821 • FAX 813.740.3504  
[www.floridastatefair.com](http://www.floridastatefair.com)

*Spectacular Events Happen Here*