

Youth

Arts, Crafts & Photography Competition Handbook

Fine Art, Crafts, Photography, Home & Holiday Crafts,
Digital Arts & Graphic Design

IMPORTANT DATES

Online or Paper Entry Form deadline	Friday, December 8, 2023
Late Entry Form Period	December, 9 – 15, 2023
Deliver items to the Florida Center – located at the Florida State Fair. (see page 14)	Thursday, January 11 thru Saturday, January 13, 2024 THR - FRI hrs: 9:30 a.m.-6 p.m. SAT hrs: 9:30 a.m. – 4:00 p.m.
Shipping Information – (see page 14)	
Items exhibited	February 8 – 19, 2024
Entry pickup	Wednesday, February 21 thru Saturday February 24, 2024 WED - FRI hrs: 11 a.m. - 6 p.m. SAT hrs: 11 a.m. – 3 p.m.

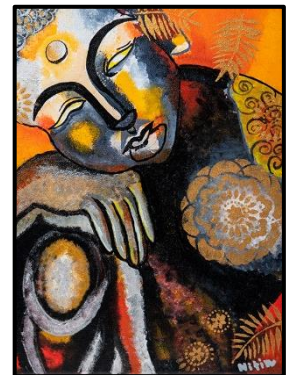
For more information, contact
Competitive Exhibit Coordinator



Brenda Gregory

Phone: 813-734-2810

Email: brenda.gregory@floridastatefair.com



**The 2023 Youth
Fine Art (age 11-13)
Best of Show
winner was Nitin
Kandakumar.**

Benefits of Competing?

The Florida State Fair is proud to showcase the bounty of talented children from around the state. Not only do we provide you the opportunity to win ribbons and prize money... it's also a great way to share your talent with a larger community. **In appreciation... all exhibitors receive two FREE tickets to attend the fair.**

Competition Overview



Entry Fee: Youth Divisions \$2 per entry
Late fee \$4 per entry

Entry Fees are non-refundable

All information regarding **Creative Living Competitive Exhibits** can also be found at www.floridastatefair.com.

How to enter online – page 14

General Rules – page 15

Paper entry form is available on the last page.

Exhibitors are strongly encouraged to read this handbook in its entirety.

To enter as a school, group or organization contact Creative Living office at 813-627-4309.

Eligibility

The Youth Arts, Crafts & Photography Divisions are open to Florida residents in grades 1 – 12, as of September 1, 2023.

Divisions in the Youth Arts, Crafts & Photography Competition

Fine Art – page 3

Digital Art & Graphic Design– page 5

Photography (B&W and Color) – page 6

Holiday/Seasonal Crafts – page 8

Home Craft – page 9

Crafts – page 10 - 12

- Ceramics
- Glass & Mosaics
- Jewelry
- Woodworking
- Leatherwork
- Gourd Craft

Entry Rules

NUMBER OF ENTRIES

1. Because of the limitations of the space for display an overall total of **three (3) items per person in each division** will be accepted for judging.

For example: An exhibitor can enter up to 3 items in Fine Art and up to 3 items in Home Craft, etc.

2. No limit to the number of pieces in each class.

ORIGINALITY GUIDELINES

3. **Teachers:** If submitting student's work, do not bring in any more than three (3) similar "look-alike" entries from a class project.
4. **All work must be original.** Art reproduced or rendered from the works of masters, from advertisements, materials from published sources, or from widely circulated photographs (other than the artist's own photos) is not original.

SIZE & PREPARATION GUIDELINES

5. All artwork must be labeled with the exhibitors name on the back or bottom of the piece.
6. **Two-dimensional Fine Art artwork cannot exceed 24" in any direction.**
7. **All two-dimensional artwork must be received installation-ready.** Most artwork must be framed unless painted on a gallery wrapped canvas. Painting must continue on all sides or be painted black on a gallery wrapped canvas. Artwork must be suitably wired using strong screw eyes and wire. *See "Preparing Entry for Exhibition" on page 4.*
8. **Artwork with clip mounts, missing wires, string, or saw tooth hangers WILL NOT BE ACCEPTED.**
9. **Photographs, Digital Art & Graphic Design must be matted. The finished size of the mat board must be 11" x 14"** *See "Preparing Entry for Exhibition" on page 7.*
10. **Three-dimensional artwork cannot exceed 24" in any direction,** unless approved by Competitive Exhibit Coordinator.
11. **All three-dimensional artwork must be received installation-ready.** Provide a base if necessary for structural support. The Fair will provide pedestals and glass cases to protect the work.
12. All artwork must be dry when submitted.
13. Artists must disclose if art or artwork was created using an Artificial Intelligence Generator. *See Fine Art Class 21.*

GENERAL ENTRY RULES

14. Each youth exhibitor will receive two (2) daily admission ticket(s) to the Fair.
15. Entries previously exhibited in the Florida State Fair may not be submitted for competition.

16. Exhibited work must be completed within the last two (2) years.
17. Entries must have been prepared/made/processed by the exhibitor in whose name they are entered.
18. All entries will be displayed at the Fair whether they receive an award or not. In keeping with the Florida State Fair's family orientation, items of an offensive, controversial, or objectionable nature or subject matter will not be accepted.

Judging & Awards

The Fair ensures that the judges we employ are knowledgeable in the division in which they are judging and will be impartial. Judges reserve the right to reassign entries to a more appropriate division or class. Judging will be done using a scorecard to assist in keeping decisions as objective as possible. **The decision of the judge(s) is final.**

If, at the Judge's discretion, an entry does not merit a placing, the Judge shall give no award under any circumstance. This rule applies whether there is one or more exhibits in the Class.

Awards Information

First Place – State Fair Ribbon \$12

Second Place – State Fair Ribbon \$7

Third Place – State Fair Ribbon \$4

Best of Show – State Fair Ribbon \$20

Best of Show Awards will be chosen from the Youth Arts, Crafts & Photography Age Group Division winners (Fine Art, Digital Art & Graphic Design, Photography, Home Craft, Holiday & Seasonal Craft, and all of the Fine Crafts).

Honorable Mention Ribbons may be awarded, at the discretion of the judge(s).

Judging Criteria

Composition/Design – 30%

Arrangement and balance of visual elements

Originality & Creativity – 30%

Impact on viewer, unique approach to subject matter... Is there a WOW factor?

Execution Quality – 30%

Technique, craftsmanship, Excellence in skills in the making of the piece. Mastery if the medium.

Presentation – 10%

Prepared and mounted neatly and securely to meet requirements.



Fine Arts (Youth) – Divisions & Classes

See Page 4 for Preparing Fine Arts Entries for Exhibition

Definitions

Painting includes Acrylic, Oil & water media and can be used any combination on the same piece. Minor additions of other media is fine (i.e. markers).

Drawing includes graphite pencil, charcoal, color pencil, etc.

Pastel includes soft & oil pastels as well as crayons.

Pen, Ink & Markers: black & white, color, or zentangle. This includes Alcohol-Based Inks & Markers.

Recycled Art must use at least 80% recycled materials

Scratch Art uses a cardboard or wooden board that is coated with impermeable white clay and covered by a layer of ink that is scratched or scraped in patterns revealing the white surface below.

Art with Embellishments (any medium) is any medium of art that has beads, glitter, rhinestones, etc. attached to the surface.

3D Mixed Media uses more than one medium to create a sculptural piece of art.

Decorative Arts is mostly painting on a 3D surface, for example, a wooden box. If your art is painted on paper or canvas, you should apply in the Fine Art (Youth) competition (see below). If you are painting on 3D surface there is a new Class in Youth Arts for Decorative Art Entries.

Art Inspired by Cultural Icons is artwork that utilizes characters that are not the creation of the exhibitor.

Art Created from Artificial Intelligence Generator is any form of digital art created or enhanced with AI tools.

Fine Art – Youth

Youth (age 6-8)	Division 90.3011
Youth (age 9-10)	Division 90.3012
Youth (age 11-13)	Division 90.401
Youth (age 14-18)	Division 90.501

Class Description

Paintings – Acrylic, Oil & Water Media

- 1 Painting – People
- 2 Painting – Places (Land, Sea, Sky & City Scapes)
- 3 Painting – Still Life & Things
- 4 Painting – Animals
- 5 Painting – Flowers, Plants & Trees
- 6 Painting – Abstract & non-representational

Other 2 & 3-Dimensional Art

- 7 Drawing (Black & White)
- 8 Drawing (Colored Pencil)
- 9 Pen, Ink & Markers
(includes Calligraphy, Zentangle, etc.)
- 10 Scratch Board
- 11 Pastel & Crayon
- 12 Art with Embellishments (any medium)
- 13 Printmaking
- 14 Recycled Art
- 15 Decorative Arts
- 16 2D Mixed Media
- 17 Sculpture
- 18 3D Mixed Media
- 19 Animation, Cartooning & Manga
(Original Design - Digital or hand drawn)
- 20 Art Inspired by Cultural Icons
(Digital or hand drawn)
- 21 **Art Created from Artificial Intelligence Generator**



The 2023 Youth Fine Art (age 14-18) Best of Show winner was Clara Walter.

Judging Criteria

Composition/Design – 30%

Arrangement and balance of visual elements

Originality & Creativity – 30%

Impact on viewer, unique approach to subject matter... Is there a WOW factor?

Execution Quality – 30%

Technique, craftsmanship, Excellence in skills in the making of the piece. Mastery of the medium.

Presentation – 10%

Prepared and mounted neatly and securely to meet requirements.

Preparing Fine Arts (YOUTH) Entries for Exhibition

Fine Arts (2D) (Items that can be hung on wall)

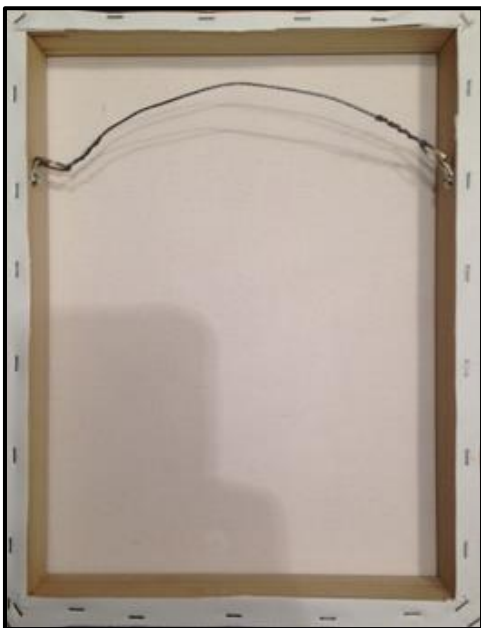
Artwork should be framed excluding gallery wrapped canvases.

- **Framed items** must be ready to hang using secure screw eyes and wire.
- **Gallery wrapped canvases** should be ready to hang using secure screw eyes and wire.

Gallery wrap is a method of stretching an artist's canvas so that the canvas wraps around the sides of the stretcher bar or strainer bars and is secured to the back of the wooden frame, where the hardware (staples, tacks, etc.) is hidden.

- **All artwork must be labeled with the exhibitors name on the back of the piece.**

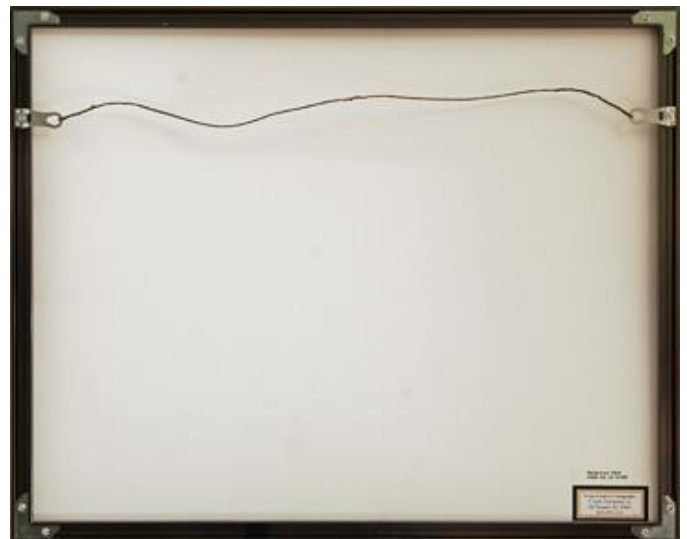
Wiring of gallery wrapped canvases



Fine Arts (3D) (Items that sit on pedestal or shelf)

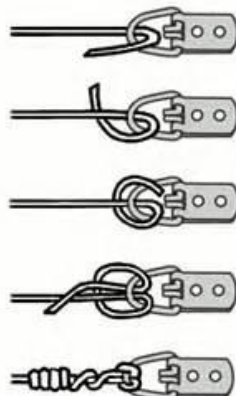
- **All three-dimensional artwork must be received installation-ready.** Provide a base if necessary for structural support. The Fair will provide pedestals and glass cases to protect the work.
- **All artwork must be labeled with the exhibitors name on the bottom of the piece.**

Examples of wire hangers on frames



LARK'S HEAD KNOT

Also called...
Lark's foot, Cow
hitch, Girth hitch,
Ring hitch,
Lanyard hitch,
Bale Sling hitch,
Baggage Tag
Loop, Tag Knot,
Deadeye hitch,
Running eye



Digital Arts & Graphic Design (Youth) – Divisions & Classes

Definitions

Digital Art uses technology to create works of art.

2D Digital Art: A drawing, painting, or pixel art created using software.

3D Digital Art: 3D painting, modelling, or sculpting art created using 3D software (e.g. Blender, Maya, Cinema 4D, and ZBrush).

Digital Mixed Media: Includes digital collage and integrated digital art.

- **Digital Collage:** Combines different textures and images from several sources into a collage.
- **Integrated Digital Art:** Combines two or more art forms, using different software - raster painting, vector drawing, digital photos, and computer-generated vectors.

Computer Generated Art: Known as generative art, it uses a computer program or algorithm to create the art.

- **Algorithmic Art:** Art in which the design is generated by a computer algorithm.
- **Fractal Art:** A geometric pattern is repeated to create irregular shapes and patterns.



The 2023 Youth Digital Arts & Graphic Design (age 14-18) Best of Show winner was Grace Rodda.

Digital Arts & Graphic Design – Youth

Youth (age 6-10)	Division 90.302
Youth (age 11-13)	Division 90.402
Youth (age 14-18)	Division 90.502

Class Description

Digital Arts

- 1 2D Digital Art
- 2 3D Digital Art
- 3 Digital Mixed Media
- 4 Computer Generated Art

Graphic Design

- 5 Logo Design
- 6 Graphic Design Project

- 7 Digital Art Inspired by Cultural Icons (any kind)

See Page 7 for Preparing Digital Arts & Graphic Design Entries for Exhibition

Judging Criteria

Composition/Design – 30%

Arrangement and balance of visual elements

Originality & Creativity – 30%

Impact on viewer, unique approach to subject matter... Is there a WOW factor?

Execution Quality – 30%

Technique, craftsmanship, Excellence in skills in the making of the piece. Mastery of the medium.

Presentation – 10%

Prepared and mounted neatly and securely to meet requirements.



The 2023 Youth Digital Arts & Graphic Design (age 11-13) Best of Show winner was Katherine Ross.

Photography (Youth) – Divisions & Classes

Definitions

All Black & White & Color photographs can be taken with any type of camera (film or digital)

Black & White Photography includes Monochrome photographs.

Film /Photographic Manipulation & Compositing (Class 15): Using darkroom tools to manipulate the original image(s). This can include using more than one source image combined into a single image. This includes multiple exposure and collage.

Digital Photographic Art (Class 16): Consists of photo painting, Photo-Bashing, and digital photo manipulation.



- **Photo Painting:** Uses computer software to enhance and transform a digital photograph into a painting.
- **Photo-Bashing:** Combines multiple digital photographs that are overlapped and blended to create a single work of art. [For examples](#)
- **Digital Photo Manipulation:** A photograph that has been digitally enhanced, changed, or modified.

Alternative Process (Class 17): The term alternative process refers to any non-traditional or non-commercial photographic printing process.

Alternative Process includes:

Alternative Printing Process: Includes cyanotype, light printing, salt printing, lifts and transfers, platinum prints, infrared, etc.

Alternative Capture Process: Uses a variety of non-traditional cameras to create images, such as Pinhole camera, Toy Camera, Polaroid, etc.

Hand colored image refers to any method of manually adding color to a black-and-white photograph, generally either to heighten the realism of the photograph or for artistic purposes.

Judging Criteria

Originality – 30%

Unique approach to subject matter
Is there a WOW factor?

Execution Quality – 30%

Exposure, white balance, focus, depth of field,
lighting, resolution, etc.

Composition – 30%

Presentation – 10%

Matted properly, print condition, etc.

See Page 7 for Preparing Photography Entries for Exhibition

Photography – Youth

Youth (age 6-10)	Division 90.303
Youth (age 11-13)	Division 90.403
Youth (age 14-18)	Division 90.503

Class Description

Black & White OR Monochrome Photography

- 1 B&W:** People (Portraits & Figures)
- 2 B&W:** (Land, Sea, Sky & City Scapes)
- 3 B&W:** Still Life & Things
- 4 B&W:** Flowers, Plants & Trees
- 5 B&W:** Animals (Wildlife, Pets & Farm Animals)
- 6 B&W:** Abstract, Surreal & Non-representational
- 7 B&W:** Other Not Listed

Color Photography

- 8 Color:** People (Portraits & Figures)
- 9 Color:** Scene (Land, Sea, Sky & City Scapes)
- 10 Color:** Still Life & Things
- 11 Color:** Flowers, Plants & Trees
- 12 Color:** Animals (Wildlife, Pets & Farm Animals)
- 13 Color:** Abstract, Surreal & Non-representational
- 14 Color:** Other Not Listed

Alternative Process (B&W or Color)

- 15 Film /Photographic Manipulation & Compositing**
- 16 Digital Photographic Art**
- 17 Alternative Process**



The 2023 Youth Color Photography (age 14-18) Best of Show winner was Benjamin Privett.

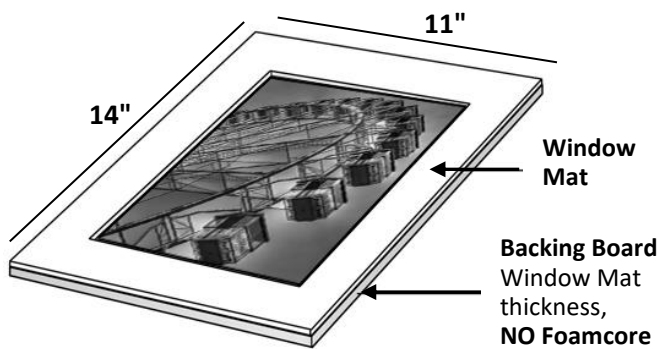
Preparing Photographs & Digital Arts & Graphic Design (YOUTH) Entries for Exhibition

Photographs & Digital Art

All artwork must be labeled with the exhibitors name on the back of the piece.

Photographs & Digital Art must be printed on photo paper (gloss or matte), unless exhibited in Alternative Process. No photos printed on canvas.

All Photographs & Digital Art must be matted in a standard single weight black or white mat board. **NO Double Mats. The finished size of the mat board must be 11" x 14"** (outer dimension).



Print size(s) can be any size as long they can be matted to fit to the 11" x 14" mat. Odd size prints may need the mat window professionally cut to size.

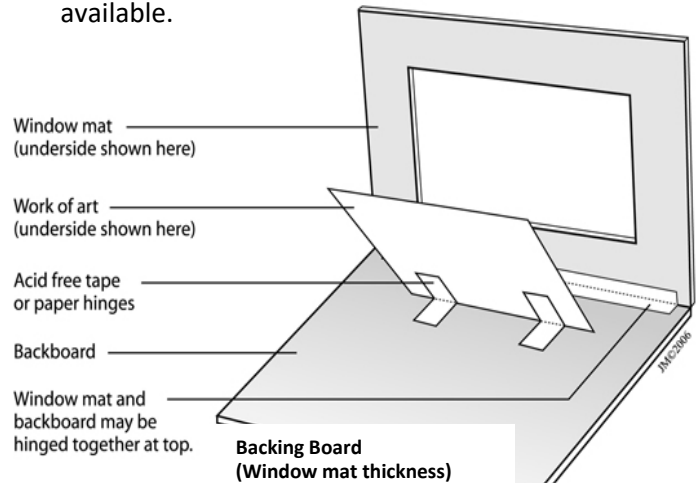
How the print gets attached to the mat is dependent on the type of pre-cut mat you purchase.

Prints can also be attached to a backing board (mat board or cardboard thickness – **NO Foamcore**) with a **hinge mount**; the method we recommend involves taping the print into place with folded hinges. Double stick tape can also be used to adhere the print to the backing board.

Note: The Florida State Fair will be inserting your **Photographs & Digital Art** in clear sleeves to further protect them during the Fair. That is why No foam core should be used to back the print.

Sources for mat boards

Michaels, Hobby Lobby & Blick Art Supply all have pre-cut photo mats. Redimat is an online resource that has many sizes as well as custom mat cutting available.



Graphic Design

All artwork must be labeled with the exhibitors name on the back of the piece.

All drawings should be mounted on a mat board no larger than 18" x 24" (digitally scanned copies allowed). In addition, provide a project description and attach it to the back of the mat board.

Holiday & Seasonal Crafts (Youth) – Divisions & Classes

Definitions

Holiday can be any nationally, religiously or culturally observed day(s) of contemplation or celebration, or the events themselves.

These include religious & non-religious holidays, federal holidays & cultural or special community celebrations like Gasparilla in the Tampa Bay Area. Also, included are Halloween, Mother’s Day, etc.

Seasonal crafts & décor that are made to celebrate the seasonal changes throughout the year.

Decorative Art is a diverse art form using a variety of techniques and mediums to decorate functional and non-functional surfaces. The designs can be original or copied patterns painted on a variety of surfaces from paper, wood items, canvas, clay pots, furniture, boxes, and many more. Mediums are anything from oil, acrylic, watercolor, colored pencils, alcohol inks, pastels, etc.

2D Décor includes items like needlework, table linens, wall hanging, paper crafts, etc.

3D Décor include items like table centerpieces, dolls, toys, wood-crafted items, home accessories, etc.



Help us celebrate Valentine’s Day by competing in the Valentine’s Day (Class 4) special contest. The winner of the Valentine’s Day class will receive special Fair ticket package.

Divisions & Classes

Holiday & Seasonal Crafts – Youth

Youth (age 6-10)	Division 90.305
Youth (age 11-13)	Division 90.405
Youth (age 14-18)	Division 90.505

Class Description

- 1 Any Holiday or Seasonal Wreaths
- 2 Christmas Tree Ornament
- 3 Christmas Specific Craft
- 4 Valentine’s Day Craft
- 5 Seasonal Craft
- 6 Holiday (Non-Christmas) Craft
- 7 Any Holiday or Seasonal Decorative Art



The 2023 Youth Holiday & Seasonal Craft (age 6-10) Best of Show winner was Aniela Duncan.

Judging Criteria

Originality – 40%

Unique approach to subject matter
Is there a WOW factor?

Execution – 40%

Craftsmanship, excellence in skill and technique

General Appearance – 10%

Visually appealing, clean

Degree of Difficulty – 10%

The 2023 Youth Holiday & Seasonal Craft (age 11-13)

Best of Show winner was Isaiah Gabriel.



The 2023 Youth Holiday & Seasonal Craft (age 14-18) Best of Show winner was Ayona Bagui.

Home Crafts (Youth) – Divisions & Classes

Definitions

Home Craft Includes:

- Paper crafts
- Polymer Clay
- Doll making
- Macramé
- Applique Craft (includes beads, studs and rhinestones)
- Beadwork (non-jewelry)

Paper craft: is the collection of art forms employing paper or card as the primary artistic medium for the creation of two or three-dimensional objects. This include card making, scrapbooking, Paper Mache, paper clay, quilling, etc.

Home Décor & Accessories Includes:

- Flower Arranging (dried or artificial)
- Rugs (Not traditional rug hooking)
- Wreaths (Non-holiday or seasonal)
- Whimsical Stitchery

Home Décor & Accessories includes wall-hangings, signs, or any item that decorates your living or work area.

Garden Art Includes:

- Birdhouses
- Planters and Containers
- Yard Art Sculptures

Repurposed (recycled art) Items are transformed or modified to use for a purpose other than its originally intended use, for example, a coffeepot made into a birdhouse. **Items should be made from at least 80% recycled materials.**

Scale Model Building involves the creation of physical models either from kits or from materials and components acquired by the builder. A model is generally considered physical representations of an object and maintains accurate relationships between all its aspects.

Divisions & Classes

Home Craft – Youth

Youth (age 6-10)	Division 90.306
Youth (age 11-13)	Division 90.406
Youth (age 14-18)	Division 90.506

Class Description

- 1 Home Craft
- 2 Home Décor & Accessories
- 3 Garden Art
- 4 Recycled/Repurposed Art
- 5 Scale Model Building
- 6 Other Not Listed

Judging Criteria

Originality – 40%

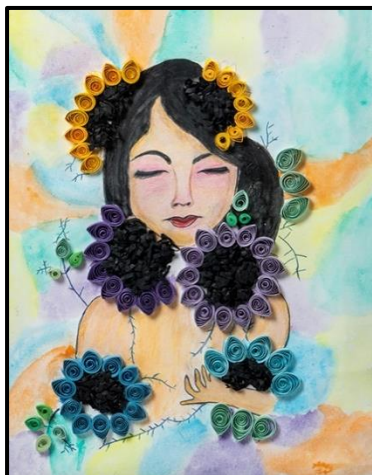
Unique approach to subject matter
Is there a WOW factor?

Execution – 40%

Craftsmanship, excellence in skill and technique

General Appearance – 10%

Visually appealing, clean



The 2023 Youth Home Craft (age 14-18) Best of Show winner was Isaiah Hartwig.



The 2023 Youth Home Craft (age 6-10) Best of Show winner was Chloe Gabriel.



The 2023 Youth Home Craft (age 11-13) Best of Show winner was Medha Kandakumar.

Ceramics (Youth) – Divisions & Classes

Celebrates ceramics made by Florida residents throughout the year.

Definitions

Functional Ceramics: Refers to any ceramics piece that is not purely decorative and has some intended use. Typical examples include teapots, bowls, mugs, and vases, etc.

Non-Functional Ceramics: Created mainly for decorative use versus having a useful purpose.

Hand-Built: Any one of various techniques for creating ceramic objects that **do not** involve the use of a potter's wheel. These methods include coiling, slab building, and pinch pots.

Wheel Thrown: A process of producing pottery by use of a rapidly rotating disk referred to as a potter's wheel.

Bisque ware: Refers to unglazed clay that has undergone an initial, low temperature firing in a kiln.

Divisions & Classes

Ceramics – Youth

Youth (age 6-10)	Division 90.307
Youth (age 11-13)	Division 90.407
Youth (age 14-18)	Division 90.507

Class Description

- 1 Functional Ceramics
- 2 Non-functional Ceramics
- 3 Commercially-Made Molds (glazed or painted bisque ware)

The 2023 Youth Ceramics (age 6-10) Best of Show winner was Chloe Gabriel.



The 2023 Youth Ceramics (age 11-13) Best of Show winner was Lakshmy Gomez Cabello.



The 2023 Youth Ceramics (age 14-18) Best of Show winner was Taylor Shawen.

Glass & Mosaics (Youth) – Divisions & Classes

Divisions & Classes

Glass & Mosaics – Youth

Youth (age 6-10)	Division 90.308
Youth (age 11-13)	Division 90.408
Youth (age 14-18)	Division 90.508

Class Description

- 1 Stained Glass
- 2 Fused Glass
- 3 Mosaic
- 4 Other Not Listed

The 2023 Youth Glass & Mosaic (age 6-10) Best of Show winner was Chloe Gabriel.



The 2023 Youth Glass & Mosaic (age 14-18) Best of Show winner was Isabella Theofanous.



Jewelry (Youth) – Divisions & Classes

Definitions

Beadwork

Bead Strung: An individual piece or a set of jewelry that is made from various glass beads, crystals, semi-precious stones, wood, metal beads, found objects, etc. Can include lampwork beads and commercially purchased.

Set: A group or ensemble of jewelry items that go together; for example, a ring, bracelet, necklace, and earrings of matching design.

Lampworking: A type of glasswork where a torch or lamp is primarily used to melt the glass to create beads, buttons, components, etc. At least 50% of the piece of jewelry needs to contain lampwork components.

Bead weaving: Weaving on a loom or using off loom stitches with a needle and thread.

Bead Embroidery: Hand stitching beads onto a fabric or leather backing.

Kumihimo: Weaving cords or threads using a disc.

Beading Mixed Media: Using a variety of bead-working techniques to create one piece.

Metal Work

Fabrication: Created by manipulating wires, sheet metal using traditional fabrication techniques such as bending, forging, sawing, soldering, etc. This class will

include jewelry-related objects that are 50% or more fabricated metal made into finished jewelry.

Casting: Created using traditional casting techniques such as centrifugal, vacuum, cuttlebone. No commercial waxes or casting allowed. This class will include jewelry-related objects that are 50% or more cast metal made into finished jewelry.

Wire Working

Wire Wrapping & Weaving: Twisting and wrapping wires into components that are connected without soldering or heating the wires.

Chain Maille: Linking jump rings together using interlocking patterns.

Viking Knitting: Knitting wire using loop in loop techniques around a dowel.

Jewelry Made from Non-Traditional Materials

Polymer Clay: A type of hardening modeling clay based on the polymer polyvinyl chloride (PVC). It is typically used for making arts and craft items.

Metal Clay: A crafting medium consisting of very small particles of metal such as silver, gold, bronze, or copper mixed with an organic binder and water for use in making jewelry, beads and small sculptures.

Leather: Jewelry made from leather

Fused Glass: Jewelry made from fused glass

Macramé: art of knotting cord or string in patterns to make decorative articles.

Note: The Fair will supply display stands for jewelry, if you have a special display for you pieces contact Competitive Exhibits Coordinator at brenda.gregory@floridastatefair.com or 813-734-2810.

Divisions & Classes

Jewelry – Youth

Youth (age 6-10)	Division 90.309
Youth (age 11-13)	Division 90.409
Youth (age 14-18)	Division 90.509

Class Description

- 1 Beadwork
- 2 Metal Work
- 3 Wire Working
- 4 Jewelry made from Non-Traditional Materials
- 5 Other Not Listed



The 2023 Youth Jewelry (age 6-10)
Best of Show no winner was awarded.

The 2023 Youth Jewelry (age 14-18)
Best of Show no winner was awarded.

The 2023 Youth Jewelry
(age 11-13) Best of Show
winner was Dario Pfenning.

Woodworking (Youth) – Divisions & Classes

Divisions & Classes

Woodworking – Youth

Youth (age 6-10)	Division 90.310
Youth (age 11-13)	Division 90.410
Youth (age 14-18)	Division 90.510

Class Description

- 1 Woodworking (non-furniture)
- 2 Wood Burning
- 3 Furniture (made from softwoods)
- 4 Woodcarving & Whittling
- 5 Laser Cutting & Engraving
- 6 **Woodturning**
- 7 Other Not Listed



Definitions

Woodworking includes:

Fine wood furniture starts with hardwood (like cherry, maple, walnut and oak) as opposed to soft wood (like pine and other coniferous woods). **Home Décor & Accessories** includes wall-hangings, signs, or any item that decorates your living or work area.

Fretwork: An interlaced decorative design that is either carved in low relief on a solid background, or cut out with a fretsaw, coping saw, jigsaw or scroll saw.

Marquetry: The art and craft of applying pieces of veneer to a structure to form decorative patterns, designs or pictures of natural wood color. Any size (no kits).

Intarsia: A decorative inlaid pattern in a surface, especially a mosaic worked in wood in any finish.

Laser Cutting and Engraving is fabrication technique that consists of cutting or engraving wood by means of a laser. Engraving is done on the surface of any medium such as slate, wood, cork or acrylic or metals. Laser cutting is a method that uses the laser to cut through metals, paper, wood, and acrylics.

Leatherwork (Youth) – Divisions & Classes

Definitions

Leatherwork includes:

Saddles & Tack: Tack is a piece of equipment or accessory equipped on horses in the course of their use as domesticated animals. Saddles, stirrups, bridles, halters, reins, harnesses, martingales, and breastplates are all forms of horse tack.

Practical Cases: Any leather item used to store, cover, or carry an object, worn by man or animal.

Table Art: Any leather item used for decoration and **NOT** worn by man or animal.

Traditional Wearables: Leather items worn by Florida Cowboys, Native Americans, soldiers and hunters for daily work or special occasions.

Divisions & Classes

Leatherwork – Youth

Youth (age 6-10)	Division 90.311
Youth (age 11-13)	Division 90.411
Youth (age 14-18)	Division 90.511

Class Description

- 1 Leatherwork

Gourd Craft (Youth) – Divisions & Classes

Definitions

What is Gourd Craft? The artist uses a hard-shelled gourd as a canvas to create anything that they can imagine. Gourd surfaces may be carved, painted, sanded, burned, dyed and embellished with wire, beads, natural fibers and reed.

Painted Gourd: At least 25% of the surface needs to be decorated with painting techniques. This includes stains and inks.

Painted & Decorated: Needs to compete in Mixed Techniques or Media Class.

Divisions & Classes

Gourd Craft – Youth

Youth (age 6-10)	Division 90.312
Youth (age 11-13)	Division 90.412
Youth (age 14-18)	Division 90.512

Class Description

- 1 Gourd Craft

Additional Youth Best of Show winners

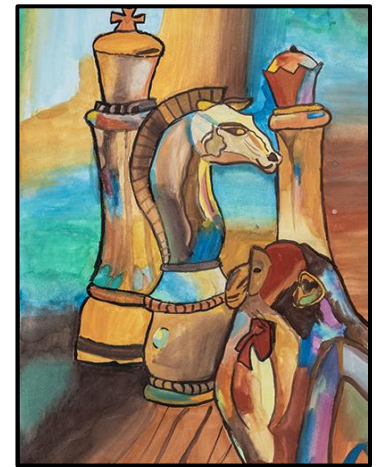


The 2023 Youth Woodworking (age 14-18) Best of Show winner was Colin DiMarco

The 2023 Youth Woodworking (age 6-10) Best of Show winner was Zachariah Cruz.



The 2023 Youth Leatherwork (age 11-13) Best of Show winner was Nolen Baker.



The 2023 Youth Fine Art (age 6-10) Best of Show Winner was Kashi Gujala Kumar.



The 2023 Youth Woodworking (age 11-13) Best of Show winner was Zavier Cruz.



The 2023 Youth Color Photography (age 6-10) Best of Show winner was Sophia Deaton.




The 2023 Youth Color Photography (age 11-13) Best of Show winner was Katherine Ross.

How to Enter Online

We encourage you to enter online, using ShoWorks. The Florida State Fair has implemented ShoWorks, an on-line entry program. ShoWorks is an industry standard used by over 50 fairs nationally. This user-friendly program can be trusted to accurately enter you into our competitions and allows for efficient communication via e-mail. We are excited to have ShoWorks to better facilitate entering Florida State Fair competitions.

- **Take a moment to look through this Competition Handbook to see which division and class your entry is eligible to compete in.** Then, follow the easy steps listed below to enter the competition you have chosen.
- **To Enter Online using ShoWorks.**
Go to www.floridastatefair.com and at the top of the home page select the **PARTICIPANTS** TAB and you will see in the dropdown list a link for **CREATIVE LIVING**. Select the [ENTER ONLINE](#) link on the left side of the page.
- **Everyone must register as a new exhibitor even if you have competed in the past.**
- **Note that sessions expire after 20 minutes of inactivity, so “save the cart” if you plan on leaving the computer for more than 20 minutes.**
- When registering, please verify that all information that you entered into ShoWorks is correct. Please pay special attention to capitalization, full names of cities/counties and use proper spelling (no abbreviations).

 If you [ENTER ONLINE](#) you will need to pay with a credit card at that time. You will not be able to delay payment as we were able to do in the past.

Mailing Paper Entry Forms

- **Entry Forms must be postmarked by Friday, December 8th, 2023.**
Failure to complete any portion of entry form may result in disqualification.

Late entries must be postmarked between December 9th-15th 2023 will incur an increased entry fee.

Mail Entry Form to:

Creative Living Competitions – Youth Arts & Crafts
Florida State Fair
P.O. Box 11766
Tampa, FL 33680

Make checks payable to: Florida State Fair Authority

Delivery of Entries

- **All entries must be delivered to the Florida State Fair Authority on either:**

Thursday, January 11, 2024	9:30 a.m. – 6:00 p.m.
Friday, January 12, 2024	9:30 a.m. – 6:00 p.m.
Saturday, January 13, 2024	9:30 a.m. – 4:00 p.m.
- **Deliver entries to:**
Florida State Fair Authority
Florida Center Bldg.
Enter off of Martin Luther King Blvd. thru the MLK entrance on the south side of the fairgrounds.
Map with directions to the Florida Center available on the [Creative Living webpage](#).
- Entries arriving at the Fairgrounds after Delivery and Shipping Deadlines may be disqualified.

Shipping Information

- **Shipped entries must arrive no later than Tuesday, January 9, 2024.**
- Include a [Shipping Form](#), available at the bottom of the www.floridastatefair.com on the **Creative Living** webpage in [Maps, Forms & Schedule](#) link.
- **Shipped entries, with Shipping Form to:**
Florida State Fair Authority – Youth Arts & Crafts
4800 US Hwy 301 North
Tampa, FL 33610.
- Entries are shipped back to exhibitors after the Fair in the same container. Use reusable shipping containers.
- Return shipping costs are the responsibility of the entrant.
- **Return shipping options:** Prepaid shipping label, UPS or FedEx account.

Retrieving Entries

- **Early Pickup on is available on Tuesday, February 20th, 2024. Exhibitor must contact office prior.**
- See the calendar for Pick Up dates, times and locations (page 1).
- Entries not picked up on designated dates can be arranged for special pick-up appointment by emailing brenda.gregory@floridastatefair.com.
- All entries not claimed by September 1st of the same year will be recycled, disposed or donated through our program department.

General Rules

Disclaimer

Please be advised that competitive exhibits are entered at the exhibitor's risk. The Florida State Fair does not insure and is not responsible for any loss, damage, or theft of entries, even if the loss, damage, or theft occurs as the result of the handling of the exhibit by staff, volunteers, contractors and/or visitors. If the exhibitor desires insurance coverage, this coverage should be secured from a personal insurance agent prior to entry and the policy written to cover the period of exhibition and transportation. Reasonable care will be taken to prevent loss or damage to exhibits. Unauthorized persons are not permitted in the building after closing hours.

Division/Class Cancellation

The Florida State Fair management reserves the right to return entries and cancel any division or class in which, in its judgment, the entries are insufficient to secure adequate competition.

Entry Errors

Florida State Fair management is not responsible for finding errors in entries. Exhibitors are responsible for any and all errors which were submitted online or on entry and summary forms. No exhibitor shall be entitled to an award which has been disallowed as the result of his own error. The Florida State Fair management shall withhold the payment of awards for exhibits that are ineligible and may recover awards that have been paid for ineligible entries that are disclosed during post audits of Fair records. However, exhibitors with cause are entitled to question the validity of any disallowance. Such exhibitors should inform the Florida State Fair management immediately, in writing, giving their name, address, complete description of the entry and the reason for requesting reconsideration. Requests will not be considered later than ninety (90) days after receiving notice of disallowance.

Premium Payments

Premium Awards will be paid according to the Judging Criteria Record Sheets. **Premium checks will be void after 6 months from date on check. PLEASE CASH PREMIUM CHECKS IMMEDIATELY. After 6 months, all uncashed checks will be voided, and replacement checks will not be issued.**

Substitutions

Substitutions, if necessary, must be within the same department as the original entry. Substitutions must be completed by the last day of the entry delivery period. You cannot transfer your entry to another exhibitor.

Previously Entered Entry

Any entry that has been exhibited at a previous Florida State Fair is not eligible for entry in this year's Florida State Fair. This excludes Horticulture & Aquarium Beautiful entries.

Verification

Exhibitors wishing to verify that the Florida State Fair has received submitted entry forms and fees must include a self-addressed/stamped envelope when submitting entry forms. Online submissions will receive a confirmation code once entries are submitted.

Responsibility

The Florida State Fair shall not be responsible for exhibits remaining on the fairgrounds after designated release times. All still exhibits or display elements remaining on the Fairgrounds after the designated release time will be treated as abandoned property and will be disposed of on or before September 1st of the same year.

Removal of Entries

An exhibitor may not remove his or her entry from the Florida State Fair once it has been accepted. Entries must be on exhibit at the official opening of the Fair or at any other time specified in the Competition Handbook and shall not be removed from the Fairgrounds prior to the release date printed in the handbook, except (at the discretion of the Florida State Fair management) in cases of positive evidence of sickness, accident and/or death, or other circumstances that are in the best interests of the Fair.

Dishonored Checks

A penalty of \$25.00 per dishonored check must be paid if a check in payment of entry fees or other applicable fees is refused by the bank. Only cash, certified check or money orders are acceptable for penalty payment.

Design

The Florida State Fair assumes total design control over the presentation of all exhibits. Entries designed for hanging and not so equipped will be hung in a manner deemed appropriate by the Fair. No exhibit changes will be made once the entries have been displayed. Once an entry has been received by the Florida State Fair, no further handling of entry by exhibitor shall be permitted. Relocation and final placement shall be accomplished by Florida State Fair personnel. Entries requiring assembly/disassembly must include detailed instructions and sketches for assembly/disassembly. Instructions should indicate lifting points, unsecured parts and any other information required for such handling. Where necessary, bank pins will be utilized to attach exhibits for display.



YOUTH Arts & Crafts Competition Entry Form

OFFICE USE ONLY	
Exhibitor # _____	
Late Entry <input type="checkbox"/> YES <input type="checkbox"/> NO	
Total Fee _____	
Paid <input type="checkbox"/> YES <input type="checkbox"/> NO	
Type <input type="checkbox"/> Cash <input type="checkbox"/> MO	
<input type="checkbox"/> Check	

Entry Forms must be postmarked by Friday, December 8, 2023.
Late Entry Period: December 9th – 15th, 2023 (Additional Entry Fees)
 Failure to complete any portion of entry form may result in disqualification.

Please print legibly

Exhibitors Name (First, Last)	If Youth wins prize money, who should the check be made payable to?		
Mailing Address	County		
City	State	Zip Code	<input type="checkbox"/> Check if you are a new exhibitor
Phone ()	Email		

Please indicate Age Group **Age as of SEPT 1, 2023** _____ **Date of Birth** _____
 Youth (age 6-10) Youth (age 11-13) Youth (age 14-over)

Entry Fee: Youth Division \$2 per entry | Late entry \$4 per entry

Exhibitors may enter up to three (3) entries per division for judging. For example: An exhibitor can enter up to 3 items in Fine Art and up to 3 items in Home Craft, etc. Use additional entry forms if necessary. **Late Entry** YES NO

#	DIVISION #	CLASS #	Enter Title of Artwork or Photograph & Description for Craft	FEE
1				
2				
3				
4				
5				
6				
7				
Total Amount Due				\$

I hereby certify that I have read the Florida State Fair General Rules for the Competitive Exhibits Program (Page 15) and the above item(s) is/are entered for exhibition strictly in accordance with these rules, by which I agree to be governed. I also agree that the Florida State Fair may use my name, likeness, or photograph (including, but not limited to photographs of my entry), in any manner relating to my participation in the Competitive Exhibits Program, free of charge and without further notice or consultation.

I understand that the 2024 Creative Living Competitions & Exhibits are held in conjunction with the 2024 Florida State Fair and agree that the Florida State Fair is not liable or responsible for any delay, change of dates or cancellation of the 2024 Florida State Fair due the following unforeseeable circumstances: (a) acts of God; (b) flood, fire, earthquake; or (c) other potential disaster(s) or catastrophe(s), such as epidemics, pandemics, or explosion.

_____ Signature of exhibitor	_____ Date
_____ Signature of parent/guardian (Youth ONLY)	_____ Date

Mail Entry Form to:
Creative Living Competitions
 – Arts, Crafts & Photo (YOUTH)
 Florida State Fair
 P.O. Box 11766
 Tampa, FL 33680

Make checks payable to: Florida State Fair Authority