

# Photography Competition Handbook

# Adult

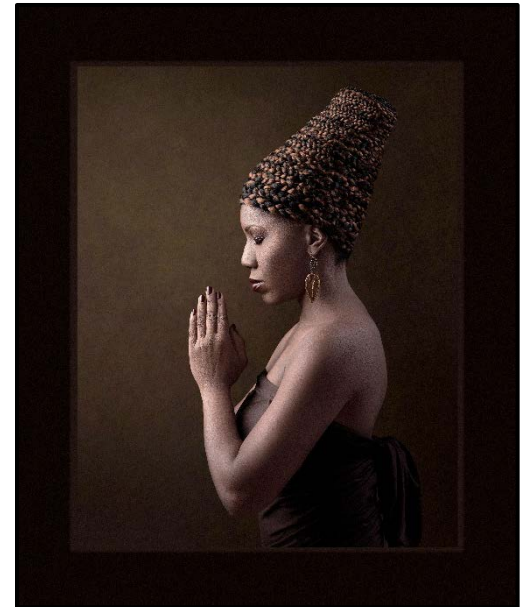
## IMPORTANT DATES

<b>Online or Paper Entry Form deadline</b>	<b>Friday, December 6, 2024</b>
<b>Late Entry Form Period</b>	<b>December 7th – 13th, 2024</b>
<b>Deliver items to the Florida Center –</b> located at the Florida State Fair. (see page 4)	<b>Thursday, January 9th thru Saturday, January 11th, 2025</b> <b>THR - FRI hrs.: 9:30 a.m.-6 p.m.</b>
<b>Shipping Information –</b> (see page 4)	<b>SAT hrs.: 9:30 a.m. – 4:00 p.m.</b>
<b>Items exhibited</b>	<b>February 6<sup>th</sup> – 17<sup>th</sup>, 2025</b>
<b>Entry pickup</b>	<b>Wednesday, February 19th thru Saturday February 22nd, 2025</b> <b>WED - FRI hrs.: 11 a.m. - 6 p.m.</b> <b>SAT hrs.: 11 a.m. – 3 p.m.</b>

For more information, contact  
The Creative Living Department

Phone: 813-734-2810

Email: [CreativeLiving@floridastatefair.com](mailto:CreativeLiving@floridastatefair.com)



## Benefits of Competing?

The Florida State Fair is proud to showcase the bounty of talented people from around the state. Not only do we provide you the opportunity to win ribbons and prize money... it's also a great way to share your talent with a larger community.

**In appreciation... all exhibitors receive a FREE ticket to attend the fair.**

## Competition Overview

**Entry Fee:** Adult Divisions \$5 per entry  
**Late fee** \$10 per entry

### Entry Fees are non-refundable

All information regarding Creative Living Competitive Exhibits can be found at [www.floridastatefair.com](http://www.floridastatefair.com) >> **PARTICIPANTS** (top of page) >> **CREATIVE LIVING** (drop down)

**How to enter online** – page 4

**General Rules** – page 5

The paper entry form is available on the last page.

Exhibitors are encouraged to read this handbook in its entirety.

## Eligibility

- The Photography Adult Divisions are open to all Florida residents ages 18 and up.
- The Photography Competition is open to professional, semi-professional, and amateur status photographers.

For Youth Photography Competitions see the Youth Arts & Crafts Competition Handbook.

The 2024 Color Photography  
Best of Show was  
Mark Melnick.

To enter as a group or organization contact Creative Living office at 813-627-4309.

# Entry Rules

## NUMBER OF ENTRIES

1. Because of the limitations for display space an overall total of **three (3) photographs per person** will be accepted for judging. All 3 can be entered in the same class or maybe entered in different classes.

## SIZE & PREPARATION GUIDELINES

2. All artwork must be labeled with the exhibitor's name on the back of the piece.
3. **Photographs must be printed on photo paper (gloss or matte)**, unless exhibiting in Alternative Process. No photos printed on canvas.
4. **All photographs must be matted and the finished size of the mat board must be 11" x 14"** (outer dimension). **Do not frame your entry.**
5. **Prints that are not matted will not be accepted.** See "Preparing Entry for Exhibition" on this page.

## GENERAL ENTRY RULES

6. Each adult exhibitor will receive one (1) daily admission ticket to the Fair.
7. Entries previously exhibited at the Florida State Fair may not be submitted for competition.
8. Exhibited work must be completed within the last two (2) years.
9. Entries must have been prepared/made/ processed by the exhibitor in whose name they are entered.
10. All entries will be displayed at the Fair whether they receive an award or not. In keeping with the Florida State Fair's family orientation, items of an offensive, controversial, or objectionable nature or subject matter will not be accepted.

---

## Judging & Awards

The Fair ensures that the judges we employ are knowledgeable in the division in which they are judging and will be impartial. Judges reserve the right to reassign entries to a more appropriate division or class. Judging will be done using a scorecard to assist in keeping decisions as objective as possible. **The decision of the judge(s) is final.**

If, at the Judge's discretion, an entry does not merit a placing, the Judge shall give no award under any circumstance. This rule applies whether there is one or more exhibits in the Class.

---

## Awards Information

**First Place – State Fair Ribbon \$20**

**Second Place – State Fair Ribbon \$15**

**Third Place – State Fair Ribbon \$10**

**Best of Show – State Fair Ribbon \$30**

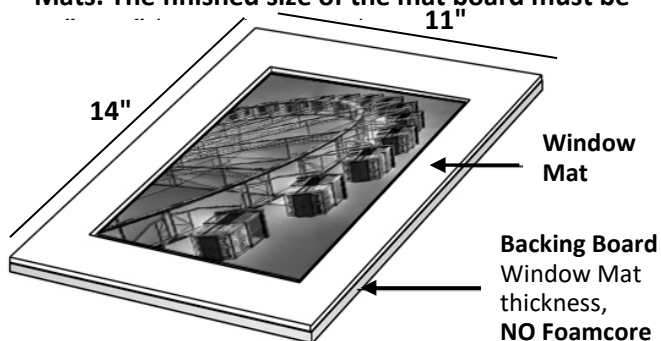
Best of Show Awards in **B&W, Color, and Alternative Process** will be chosen from the first-place winners in each class.

**Director's Choice Award**—State Fair Ribbon **\$35**

**Honorable Mention Ribbons** may be awarded, at the discretion of the judge(s).

# Preparing Photographs for Exhibition

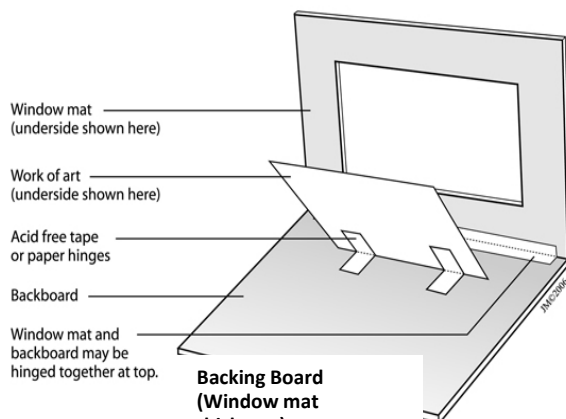
- **Photographs must be printed on photo paper (gloss or matte)**, unless exhibiting in an Alternative Process.
- **All photographs must be matted in a standard single weight black or white mat board. NO Double Mats. The finished size of the mat board must be 11" x 14"**



- **Print size(s) can be any size as long they can be matted to fit to the 11" x 14" mat.** Odd-size prints may need the mat window professionally cut to size.
- How the print gets attached to the mat is dependent on the type of pre-cut mat you purchase.
- Prints can also be attached to a backing board (mat board or cardboard thickness – **NO Foamcore**) with a **hinge mount**; the method we recommend involve taping the print into place with *folded hinges*. Double-stick tape can also be used to adhere the print to the backing board.
- **Note:** The Florida State Fair will be inserting your photographs in clear sleeves to further protect them during Fair. That is why No foam core should be used to back the print.
- **All photographs must be labeled with the exhibitors name on the back of the piece.**

## Sources for mat boards

**Michaels, Hobby Lobby & Blick Art Supply** all have pre-cut photo mats. **Redimat** is an online resource that has many sizes as well as custom mat cutting available.



# Photography – Divisions & Classes

## Definitions

All Black & White and Color photographs can be taken with any type of camera (film or digital). Most digital file will need to be adjusted to enhance the image in preparation for printing. This is not considered digital manipulation as in Class 25 of this contest.

**Film /Photographic Manipulation:** Using darkroom to manipulate the original image. (Class 24)

**Film /Photographic Compositing:** An image created from two or more source images combined into a single image. This includes multiple exposures and collage. (Class 24)

**Digital Photographic Art:** Consists of photo painting, Photo-Bashing, and digital photo manipulation. (Class 25)

- **Photo Painting:** Uses computer software to enhance and transform a digital photograph into a painting.
- **Photo-Bashing:** Combines multiple digital photographs that are overlapped and blended to create a single work of art. [For examples](#)

**Alternative Printing Process (Class 26):** The term alternative process refers to any non-traditional or non-commercial photographic printing process. These processes include, but are not limited to: cyanotype, light printing, salt printing, lifts and transfers, platinum prints, infrared, etc.

**Alternative Capture Process (Class 27):** Uses a variety of non-traditional cameras to create images; such as Pinhole camera, Toy Camera, Polaroid, etc.

**Hand colored image (Class 28):** refers to any method of manually adding color to a black-and-white photograph, generally either to heighten the realism of the photograph or for artistic purposes.

**Artwork created using an Artificial Intelligence Generator should enter the Fine Art department.**

## Judging Criteria

**Originality – 30%** Unique approach to subject matter  
Is there a WOW factor?

**Execution Quality – 30%** Exposure, white balance, focus, depth of field, lighting, resolution, etc.

**Composition – 30%**

**Presentation – 10%** Matted properly, print condition, etc.

## Photography – Adult

Division 55.101

### Class Description

#### Black & White OR Monochrome Photography

- 1 **B&W:** People (Portraits & Figures)
- 2 **B&W:** Scene (Land, Sea, Sky — scapes)
- 3 **B&W:** Scene (Architecture & City — scapes)
- 4 **B&W:** Still Life & Things
- 5 **B&W:** Flowers, Plants & Trees
- 6 **B&W:** Animals (Wildlife)
- 7 **B&W:** Animals (Pets & Farm Animals)
- 8 **B&W:** Abstract, Surreal & Non-representational
- 9 **B&W:** Close-up & Macro
- 10 **B&W:** Other Not Listed

#### Color Photography

- 11 **Color:** People (Portraits & Figures)
- 12 **Color:** Culture & Travel
- 13 **Color:** Scene (Land, Sea, Sky — scapes)
- 14 **Color:** Florida Scenery
- 15 **Color:** Scene (Architecture & City — scapes)
- 16 **Color:** Still Life & Things
- 17 **Color:** Flowers, Plants & Trees
- 18 **Color:** Animals (Wildlife, except birds)
- 19 **Color:** Animals (Birds)
- 20 **Color:** Animals (Pets & Farm Animals)
- 21 **Color:** Abstract, Surreal & Non-representational
- 22 **Color:** Close-up & Macro
- 23 **Color:** Other Not Listed

#### Alternative Process

- 24 Film /Photographic Manipulation & Compositing
- 25 Digital Photographic Art
- 26 Alternative Printing Process
- 27 Alternative Capture Process
- 28 Hand-Colored Image

### SPECIAL Photography Contest

## Discover the Fun Photo Safari... at your Florida State Fair

*The Florida State Fair is looking for talented photographers to spend the day documenting the exciting activities at this year's Fair.*

**See Photo Safari Competitions on the Creative Living Competition Page**

## How to Enter Online

We encourage you to enter online, using ShoWorks. The Florida State Fair has implemented ShoWorks, an online entry program. ShoWorks is an industry-standard used by over 50 fairs nationally. This user-friendly program can be trusted to accurately enter you into our competitions and allows for efficient communication via e-mail. We are excited to have ShoWorks to better facilitate entering Florida State Fair competitions.

- **Take a moment to look through this Competition Handbook to see which division and class your entry is eligible to compete in.** Then, follow the easy steps listed below to enter the competition you have chosen.
- **To Enter Online using ShoWorks.**  
Go to [www.floridastatefair.com](http://www.floridastatefair.com) and at the top of the home page select the **PARTICIPANTS** TAB and you will see in the dropdown list a link for **CREATIVE LIVING**. Select the [ENTER ONLINE](#) link on the left side of the page.
- **Everyone must register as a new exhibitor even if you have competed in the past.**
- **Note that sessions expire after 20 minutes** of inactivity, so “save the cart” if you plan on leaving the computer for more than 20 minutes.
- When registering, please verify that all information that you entered into ShoWorks is correct. Please pay special attention to capitalization, full names of cities/counties and use proper spelling (no abbreviations).
- If you [ENTER ONLINE](#) you will need to pay with a credit card at that time. You will not be able to delay payment as we were able to do in the past.

## Mailing Paper Entry Forms

- **Entry Forms must be postmarked by Friday, December 6<sup>th</sup>, 2024.**  
*Failure to complete any portion of the entry form may result in disqualification.*
- **Late entries must be postmarked between December 7<sup>th</sup> – 13<sup>th</sup>, 2024 will incur an increased entry fee.**

### Mail Entry Form to:

**Creative Living Competitions** – Photography  
Florida State Fair  
P.O. Box 11766  
Tampa, FL 33680

**Make checks payable to:** Florida State Fair Authority

## Delivery of Entries

- **All entries must be delivered to Florida State Fair Authority on either:**  
Thursday, January 9, 2025      9:30 a.m. – 6:00 p.m.  
Friday, January 10, 2025      9:30 a.m. – 6:00 p.m.  
Saturday, January 11, 2025      9:30 a.m. – 4:00 p.m.

### • Deliver entries to:

Florida State Fair Authority  
Florida Center Bldg.

**Enter off of Martin Luther King Blvd. thru the MLK entrance on the south side of the fairgrounds.**

**Map with directions to the Florida Center** available on the [Creative Living webpage](#).

- Entries arriving at the Fairgrounds after Delivery and Shipping Deadlines may be disqualified.

## Shipping Information

- **Shipped entries must arrive no later than Tuesday, January 7, 2025.**
- Include a [Shipping Form](#), available at the bottom of the [www.floridastatefair.com](http://www.floridastatefair.com) on the **Creative Living** webpage in [Maps, Forms & Schedule](#) link.
- **Shipped entries, with Shipping Form to:**  
Florida State Fair Authority –  
Photography Competition  
4800 US Hwy 301 North  
Tampa, FL 33610.
- Entries are shipped back to exhibitors after the Fair in the same container. Use reusable shipping containers.
- Return shipping costs are the responsibility of the entrant.
- **Return shipping options:** Prepaid shipping label, UPS or FedEx account.

## Retrieving Entries

- **Early Pickup is available on Tuesday, February 18<sup>th</sup>, 2025.** Exhibitors must contact the office prior.
- See the calendar for Pickup dates, times, and locations (page 1).
- Entries not picked up on designated dates can be arranged for a special pick-up appointment by emailing [CreativeLiving@floridastatefair.com](mailto:CreativeLiving@floridastatefair.com).
- All entries not claimed by April 1st of the same year will be recycled, disposed or donated through our program department.

## General Rules

### Disclaimer

Please be advised that competitive exhibits are entered at the exhibitor's risk. The Florida State Fair does not insure and is not responsible for any loss, damage, or theft of entries, even if the loss, damage, or theft occurs as the result of the handling of the exhibit by staff, volunteers, contractors and/or visitors. If the exhibitor desires insurance coverage, this coverage should be secured from a personal insurance agent prior to entry and the policy written to cover the period of exhibition and transportation. Reasonable care will be taken to prevent loss or damage to exhibits. Unauthorized persons are not permitted in the building after closing hours.

### Division/Class Cancellation

The Florida State Fair management reserves the right to return entries and cancel any division or class in which, in its judgment, the entries are insufficient to secure adequate competition.

### Entry Errors

Florida State Fair management is not responsible for finding errors in entries. Exhibitors are responsible for any and all errors that were submitted online or on entry and summary forms. No exhibitor shall be entitled to an award which has been disallowed as the result of his own error. The Florida State Fair management shall withhold the payment of awards for exhibits that are ineligible and may recover awards that have been paid for ineligible entries that are disclosed during post-audits of Fair records. However, exhibitors with cause are entitled to question the validity of any disallowance. Such exhibitors should inform the Florida State Fair management immediately, in writing, giving their name, address, a complete description of the entry, and the reason for requesting reconsideration. Requests will not be considered later than ninety (90) days after receiving notice of disallowance.

### Premium Payments

Premium Awards will be paid according to the Judging Criteria Record Sheets. **Premium checks will be void after 6 months from the date on the check. PLEASE CASH PREMIUM CHECKS IMMEDIATELY. After 6 months, all uncashed checks will be voided, and replacement checks will not be issued.**

### Substitutions

Substitutions, if necessary, must be within the same department as the original entry. Substitutions must be completed by the last day of the entry delivery period. You cannot transfer your entry to another exhibitor.

### Previously Entered Entry

Any entry that has been exhibited at a previous Florida State Fair is not eligible for entry in this year's Florida State Fair. This excludes Horticulture & Aquarium Beautiful entries.

## Verification

Exhibitors wishing to verify that the Florida State Fair has received submitted entry forms and fees must include a self-addressed/stamped envelope when submitting entry forms. Online submissions will receive a confirmation code once entries are submitted.

## Responsibility

The Florida State Fair shall not be responsible for exhibits remaining on the fairgrounds after designated release times. All still exhibits or display elements remaining on the Fairgrounds after the designated release time will be treated as abandoned property and will be disposed of on or before September 1st of the same year.

## Removal of Entries

An exhibitor may not remove his or her entry from the Florida State Fair once it has been accepted. Entries must be on exhibit at the official opening of the Fair or at any other time specified in the Competition Handbook and shall not be removed from the Fairgrounds before the release date printed in the handbook, except (at the discretion of the Florida State Fair management) in cases of positive evidence of sickness, accident and/or death, or other circumstances that are in the best interests of the Fair.

## Eligibility for Fair Employees

Florida State Fair Authority employees are eligible to compete in the Creative Living competitions except for those who directly work for the Creative Living Department.

## Dishonored Checks

A penalty of \$25.00 per dishonored check must be paid if a check in payment of entry fees or other applicable fees is refused by the bank. Only cash, certified check or money orders are acceptable for a penalty payment.

## Design

The Florida State Fair assumes total design control over the presentation of all exhibits. Entries designed for hanging and not so equipped will be hung in a manner deemed appropriate by the Fair. No exhibit changes will be made once the entries have been displayed. Once an entry has been received by the Florida State Fair, no further handling of entry by exhibitor shall be permitted. Relocation and final placement shall be accomplished by Florida State

Fair personnel. Entries requiring assembly/disassembly must include detailed instructions and sketches for assembly/disassembly. Instructions should indicate lifting points, unsecured parts and any other information required for such handling. Where necessary, bank pins will be utilized to attach exhibits for display.



---

**The 2024 Black & White Photography  
Best of Show was Blake Yeager.**

2025 Florida State Fair

# Photography Competition Entry Form

**OFFICE USE ONLY**

Exhibitor #	_____
Late Entry	<input type="checkbox"/> YES <input type="checkbox"/> NO
Total Fee	_____
Paid	<input type="checkbox"/> YES <input type="checkbox"/> NO
Type	<input type="checkbox"/> Cash <input type="checkbox"/> MO <input type="checkbox"/> Check
Check No.	_____

**Entry Forms must be postmarked by Friday, December 6, 2024.**

**Late Entry Period: December 7<sup>th</sup> – 13<sup>th</sup>, 2024 (Double Entry Fees)**

Failure to complete any portion of the entry form may result in disqualification.

Please print legibly

Exhibitors Name (First, Last)			
Mailing Address		County	
City	State	Zip Code	<input type="checkbox"/> Check if you are a new exhibitor
Phone (        )	Email		

**Entry Fee: Adult Division \$5 per entry | Late entry \$10 per entry**

**Exhibitors may enter up to three (3) entries for judging.**

**Late Entry**  
 YES  NO

#	DIVISION #	CLASS #	Enter Title of Photograph	FEE
1				
2				
3				
<b>Total Amount Due</b>				<b>\$</b>

I hereby certify that I have read the Florida State Fair General Rules for the Competitive Exhibits Program (Page 5) and the above item(s) is/are entered for exhibition strictly in accordance with these rules, by which I agree to be governed. I also agree that the Florida State Fair may use my name, likeness, or photograph (including, but not limited to photographs of my entry), in any manner relating to my participation in the Competitive Exhibits Program, free of charge and without further notice or consultation.

I understand that the 2025 Creative Living Competitions & Exhibits are held in conjunction with the 2025 Florida State Fair and agree that the Florida State Fair is not liable or responsible for any delay, change of dates or cancellation of the 2025 Florida State Fair due the following unforeseeable circumstances: (a) acts of God; (b) flood, fire, earthquake; or (c) other potential disaster(s) or catastrophe(s), such as epidemics, pandemics, or explosion.

Signature of exhibitor

Date

**Mail Entry Form to:**

Creative Living Competitions – Photography  
Florida State Fair  
P.O. Box 11766  
Tampa, FL 33680

**Make checks payable to:** Florida State Fair Authority